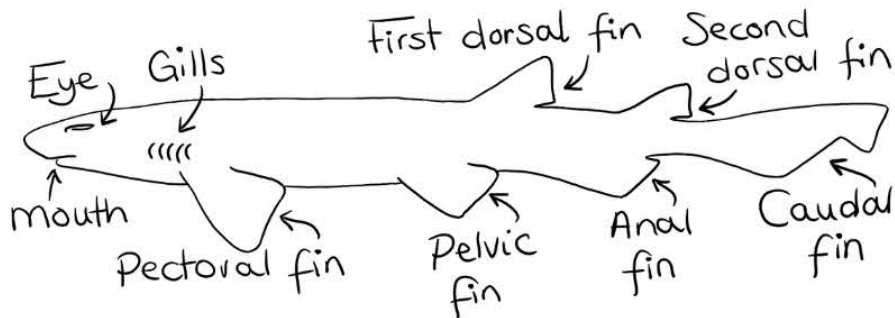


Irish Elasmobranchs

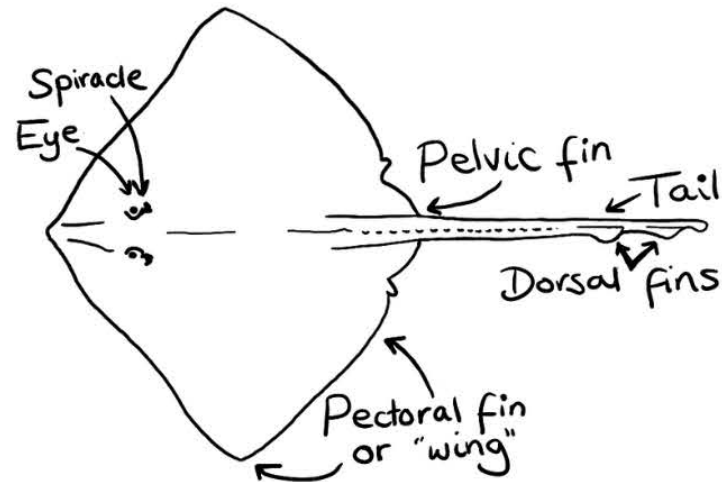
In Irish waters, there are 71 different types or “species” of elasmobranchs (pronounced “Elasmo-brank-s”), a group that includes sharks, skates and rays. These animals are different from fish as their skeletons are made of cartilage (like your ears) rather than bone.

SHARKS



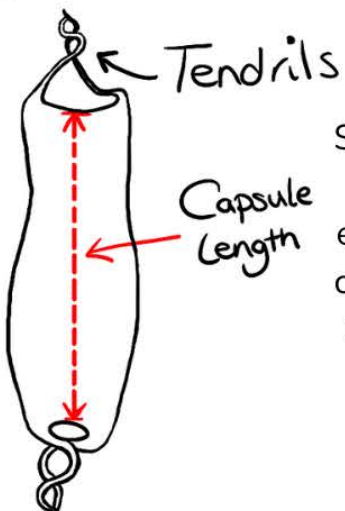
Sharks typically have a rounded body, shaped like a long cylinder that tapers at each end. While some sharks give birth to live young, some lay eggs that mature on the seabed before hatching.

SKATES and RAYS



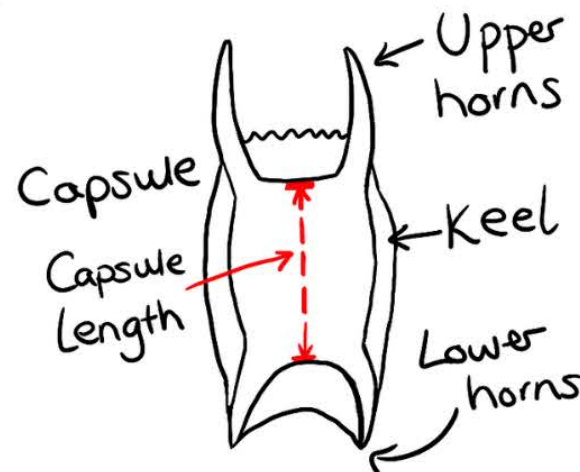
Skates and rays are “flat sharks”. Unlike sharks, their gills are on the underside of their bodies. While skates reproduce by laying eggs, rays give birth to live young.

SHARK EGGS



Shark eggs can be identified by their curly tendrils at the top and bottom of the eggcase. Two species of shark eggs more commonly wash up on beaches in Ireland, laid by either the small-spotted catshark (Irish: *Fraengach*) or the bullhuss (Irish: *Fallach*). You can tell them apart based on their capsule length.

SKATE EGGS



Skate eggs are identified based on the presence of horns at each corner of the eggcase. Skate eggs can be identified based on capsule length and the presence of keels (frills)